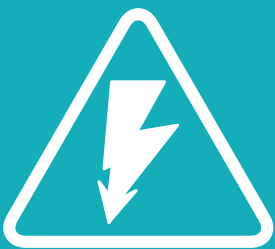




HOW TO CLEAN YOUR INSTRUMENTS

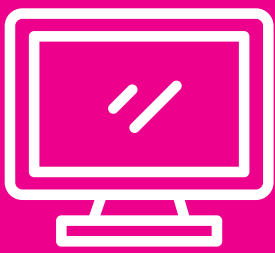
A short guide for keeping your measurement equipment clean

BASICS



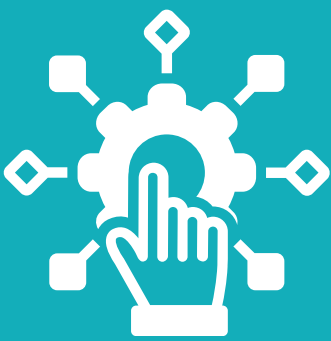
To protect yourself from electrical shock, be sure to unplug the power cable from the outlet before cleaning the instrument. Never clean the internal components of the instrument.

CLEANING AN LCD



- For normal cleaning, rub the surface gently with a dry, soft cloth.
- When stains are difficult to remove, gently wipe the surface with cloth dampened with a small amount of ethanol or isopropyl alcohol. You can clean the standard type LCD (no touch screen function) with a cloth dipped in water and then wrung tightly.
- Do not use chemicals other than ethanol and isopropyl alcohol to wet the cleaning cloth. To clean the touch screen LCD, do not wet the cloth with water.

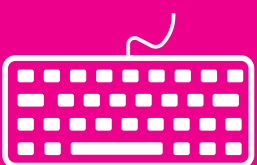
MAINTENANCE OF TEST PORTS AND OTHER CONNECTORS/PORTS



- Always keep the connectors free from stains and dust.
- Do not touch the contact surface on the connectors.
- Do not plug damaged or scratched connectors into the test ports.
- Use compressed air for cleaning connectors. Do not use abrasives under any circumstance.

The above precautions must also be observed in maintaining connectors and ports other than test ports.

CLEANING OTHER PARTS



To remove stains on other parts (e.g. keyboard or front panel) wipe them gently with a soft cloth that is dry or wetted with a small amount of water or sanitizer and wrung tightly.

LEARN MORE - WWW.CCONTROLS.CH